

# DUSK TO DAWN

WITH THE INJECTION OF STRIKING ELEMENTS, THIS HERITAGE DINING ROOM TAKES A BOLD STEP INTO THE PRESENT

Words KATE BARBER Photography PABLO VEIGA

Set on a leafy street of Sydney's upper north shore, this gorgeous Federation bungalow is brimming with stunning original features which the owners, semi-retired couple Barbara and Russell, wanted to honour when they gave their lounge (see page 170) and dining room (opposite) a contemporary update. To help them achieve their vision, they enlisted Alexandra Gourlay-Craig, owner and head interior designer at Vellum Interiors, who they entrusted to create a space where they would feel proud to entertain guests. "I imagined lively, long dinner parties held in this room and wanted the mood of the interiors to encourage that," says Alexandra, who also introduced the scene-stealing dusky-blue hue (Dulux Silver Chest). "[Barbara and Russell] really loved another space I'd designed using a dark colour on the walls," says Alexandra. "It creates a beautiful contrast to the light, bright feeling of the adjoining [living] room". The 'Spider' ceiling light by Serge Mouille adds sophistication, while the caramel-coloured leather chairs, walnut timber table and dusty-pink rug spark warmth. Now, it's become the perfect place to host family and friends. "The owners absolutely love it and had already scheduled in a dinner party prior to the room being finished," says Alexandra.



**HIGH & MIGHTY** Using the naturally darker room to her advantage, Alexandra says she wanted to "highlight the height of the ceilings and create a cocoon feeling" in this space, while also making a statement. "Bold colour on the walls and a large pendant light over the dining table helped to create the drama and impact I was going for," she says. The burnished warmth of pieces such as the 'Morgan' table by Heimur (right), custom chairs by Casa Mia, and 'Longacre' floor lamp by Montauk Lighting Co add to the cosiness of the revived space.

MAKEOVER  
BUDGET:  
\$45,000\*

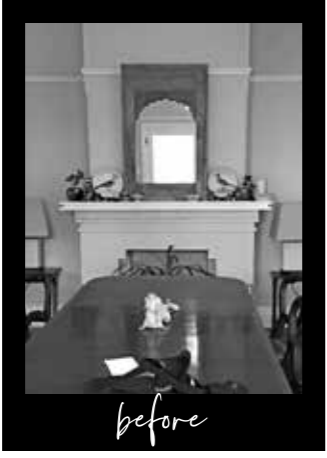


ARTWORK (ABOVE, SIDEBORD) BLUE BY MONIQUE LOVERING, VESSELS ON SIDEBORD (LEFT) TRR BY HUMBLE MATTER (RIGHT) ASYMMETRY PAIR BY KERRYN LEVY. OTHER ARTWORKS, ARTIST'S UNKNOWN. \*ESTIMATED COST. DOES NOT INCLUDE TRADES

**CLASSIC DESIGN** Suspended high above the dining table, the elegant 'Spider' light by Serge Mouille from Cult is Alexandra's favourite item here. "It draws the eye up to the incredible decorative ceiling, is sophisticated and bold, yet also has a playful, contemporary feel," she says. "The size and shape of it also fits well with the proportions of the room." >



**DARK SIDE** Aptly titled 'Blue', the artwork (below) by Monique Lovering is the ideal pairing for the room's bold canvas of Dulux Silver Chest. "I knew the space would be mainly used in the evenings, and because there's not a whole lot of natural light in the room, I felt it was right to 'lean in' to the darkness," explains Alexandra. The hue also provides a foil for the original Federation features in a contrasting colour. An 'Atollo 238' table lamp (below) from Euro luce sits atop the 'Noah' sideboard by Jardan.



**PERFECT REFLECTION** "The clients' existing mirror, while lovely, didn't fit the brief and vision," says Alexandra, explaining that its size and curved shape didn't work. Instead, she chose the 'Parlour' mirror by Warranbrooke (above) "to add impact, and bring in more light, but mainly because the pattern of the panels reflects the shape of the timber doors opposite [seen left], almost exactly."



## MINI-MAKEOVER CHEAT SHEET

### TIME FRAME

Six months for dining and living room (see page 164).

### TOP TIP

"Whenever I work with older properties, I take inspiration from the original features. I think by starting with the 'shell' of what you've got already, and layering in contemporary elements from there that fit your vision will always balance new and old really well," says Alexandra.

### SOURCE BOOK

INTERIOR DESIGN Vellum Interiors, velluminteriors.com.au.

VESSELS (WHITE) UNTITLED BY LUCY MONTGOMERY (ON TABLE WITH FOLIAGE) HONESTY BY KATARINA WELLS OTHER ARTWORKS: ARTIST'S UNKNOWN ACTUAL PAINT COLOUR MAY VARY ON APPLICATION

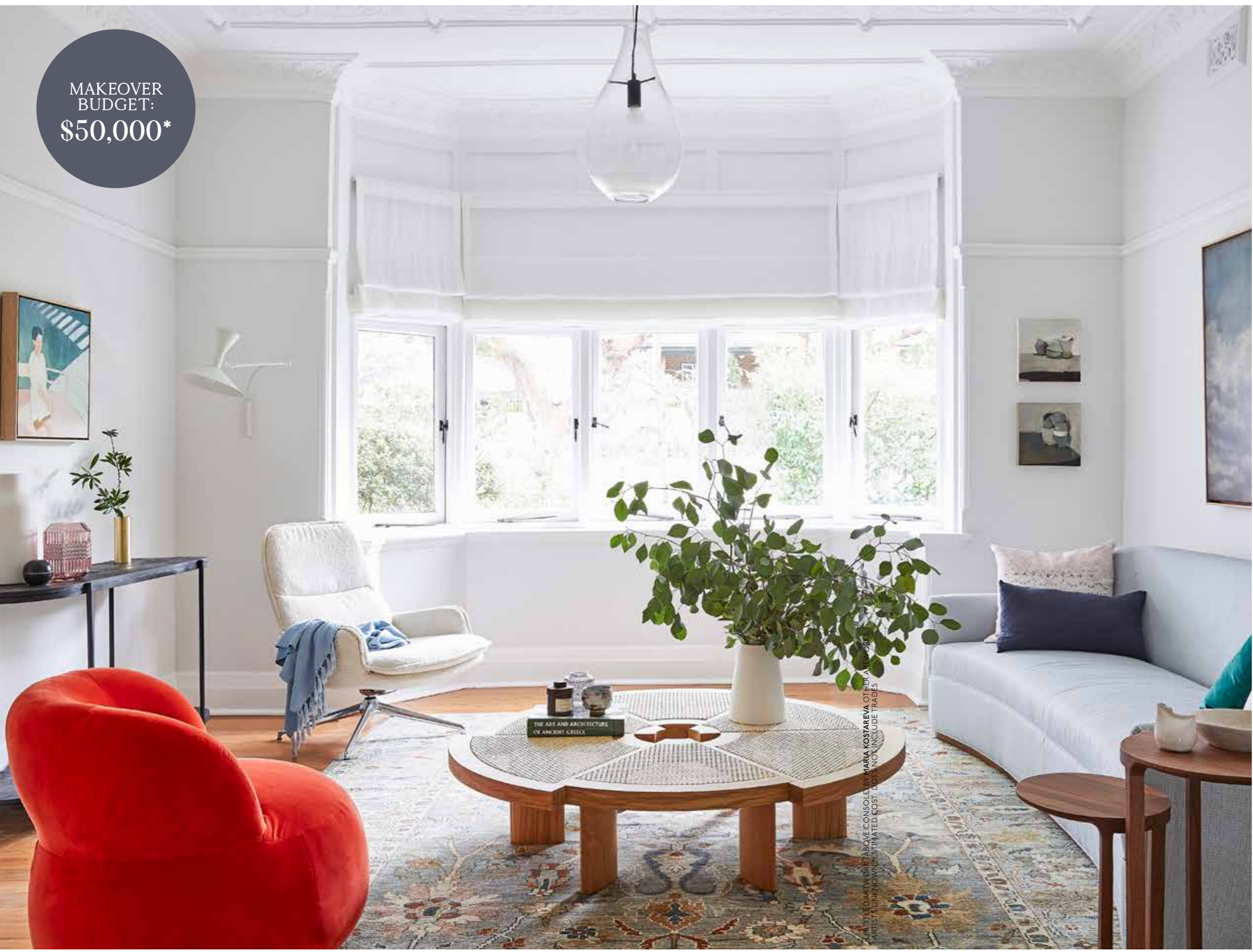
"INSPIRATION WAS  
drawn FROM THE HOUSE,  
WHICH HAS stunning  
FEDERATION FEATURES"  
~ ALEXANDRA GOURLAY-CRAIG, INTERIOR DESIGNER



**BLUE BLISS** An 'Agra' rug in Duchess from Armadillo is spotlighted by the light spilling in from the living-room bay window. "My intention was for the two rooms to feel connected, yet each having their own unique 'voice' and personality," explains Alexandra, who wanted to enhance "the feeling of day vs night" in the living and dining spaces.



MAKEOVER  
BUDGET:  
\$50,000\*



# INTO THE LIGHT

A SYMPATHETIC YET SURPRISING REDESIGN PROPELS THE LIVING ROOM OF AN ELEGANT FEDERATION-ERA BUNGALOW INTO THE HERE AND NOW

Words **KARINA MACHADO** Photography **PABLO VEIGA**

With their hearts set on updating two “barely used” formal front rooms in their Federation bungalow on Sydney’s upper north shore, semi-retired couple Barbara and Russell contacted Alexandra Gourlay-Craig, owner and head interior designer at Vellum Interiors, after admiring her work on similar properties. “They wanted to inject colour and a more contemporary personality into the spaces, while still honouring and celebrating the heritage elements which they love,” explains Alexandra, who reimagined the dining room (see page 162) and lounge (opposite), where a handsome bay window steals the show. Despite the abundance of northern light that spills into the space, “the wall colours, heavy furnishings and dated window treatments all contributed to it feeling quite dark and a little uninviting,” says Alexandra, who introduced contemporary furnishings in a quiet, sophisticated palette. The bold exception to this is a tub chair by Jordan, which adds a playful pop of tangerine. Speaking of a pop, that sums up the owners’ response to the unveiling of their transformed lounge, recalls Alexandra, with a smile: “They went to the fridge and grabbed a bottle of champagne!”



before

**BRIGHT SIDE** “What was quite a heavy, outdated room is now full of light, colour and joy,” says interior designer Alexandra, who reconfigured the furniture plan in the lounge room (opposite) to allow for a “more practical, inviting seating that’s conducive to entertaining,” she says. Pieces including the muted ‘Jay’ sofa by Arthur G, the ‘Banjo’ armchair by Jordan (by the window), and ‘Rio’ coffee table by Cassina, all enhance the sense of a lovely wide-open welcome. Now, “the entire feel of the space has changed,” marvels Alexandra. >

UNTITLED ARTWORK ABOVE CONSOLE BY MARIA KOSTAREVA OTHER ARTWORKS ARTIST'S UNKNOWN ESTIMATED COST DOES NOT INCLUDE TRADES





“THIS ROOM IS *light,*  
BRIGHT AND CONNECTED  
TO *nature* THROUGH THE  
COLOURS AND *shapes*”

~ ALEXANDRA GOURLAY-CRAIG,  
INTERIOR DESIGNER



**PRETTY PORTAL** “I was especially drawn to the colours and shape of a sweet little circular leadlight window in the room, and wanted to celebrate this,” says Alexandra of the beautiful original feature (above). With her signature flair for seamlessly melding the past and present, Alexandra has given it new life here, in unison with the ‘Jay’ sofa by Arthur G. Nau ‘Nest’ dark timber tables by Adam Goodrum from Cult and ‘Mia’ floor lamp by Montauk Lighting Co.



before

**SERENE SOPHISTICATION**  
The blue tones of High Quality Disobedience (right), an artwork by Susie Dureau, find resonance in the Arthur G sofa below, along with a deep navy cushion from In Bed and the ‘Sultanabad’ rug by Perryman Carpets, a favourite piece of Alexandra’s. “The colours are unique and also speak to the heritage-contemporary balance the brief called for,” she says.



PAIR OF ARTWORKS NEAR WINDOW (OPPOSITE), ARTIST UNKNOWN

**COLOUR CRUSH** “Contrast creates balance and harmony, while the pop of orange provides a sense of surprise,” shares Alexandra, who says her choice of Jordan’s ‘Joy’ tub chair (above) was “cheeky,” but it “makes the room,” she declares, and the homeowners “love it too!” The subtle ‘Float’ glass pendant from Mark Douglass Design suspended above the table ensures the stunning bay window remains the room’s focal point.

## MINI-MAKEOVER CHEAT SHEET

### TIME FRAME

Six months for the lounge and dining room (see page 170).

### TOP TIP

“By adding new window treatments, mounted much higher and in a sheer fabric, the eye is drawn up to make the room and the windows seem much bigger. I love using visual ‘tricks’ like this because they can make such a difference to the whole space,” says Alexandra.

### SOURCE BOOK

INTERIOR DESIGN Vellum Interiors,  
velluminteriors.com.au.